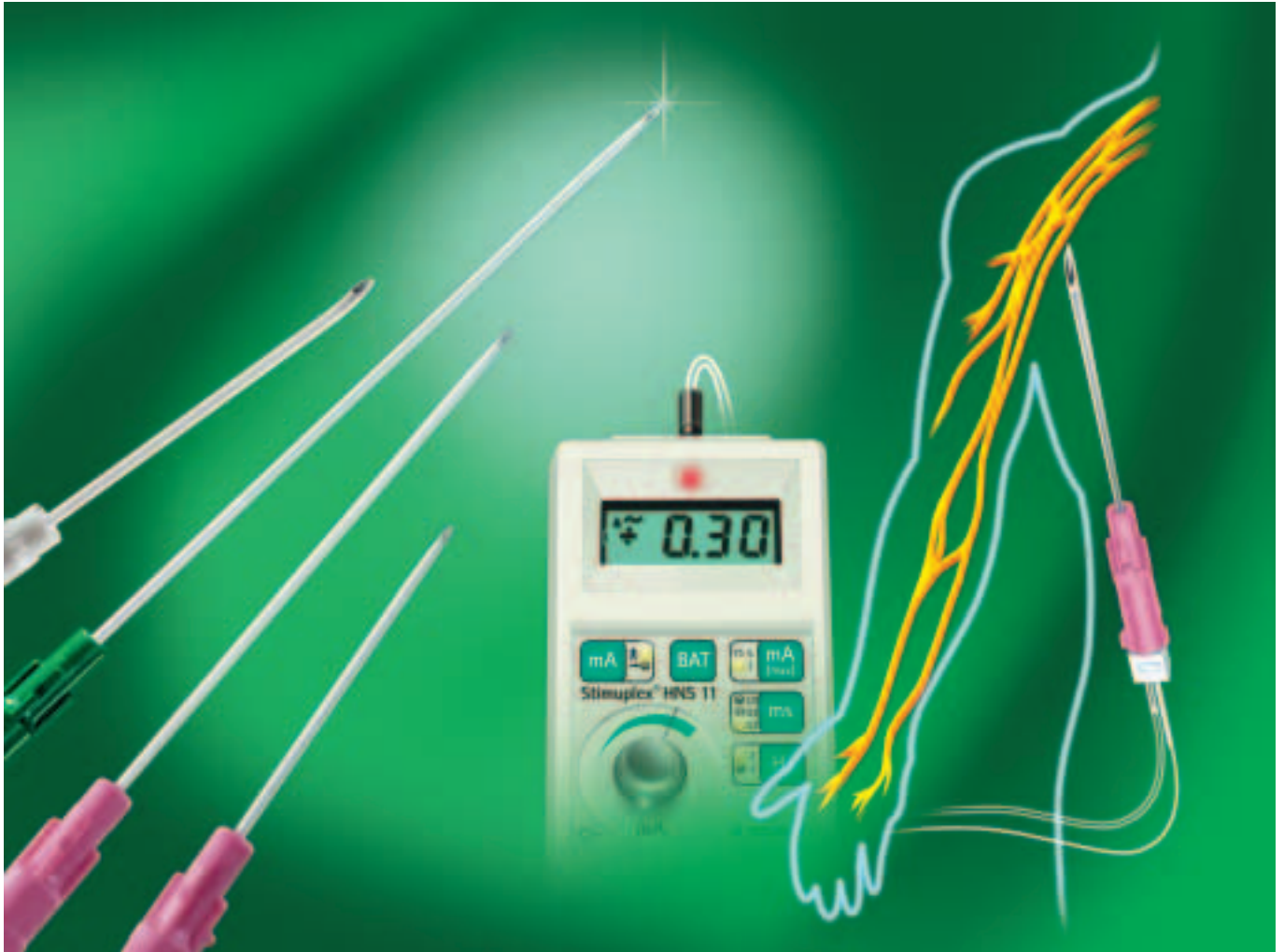
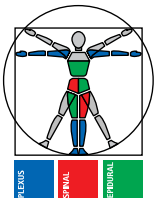


Plexus Anaesthesia

Contiplex® Tuohy
Contiplex® D 20 G
Contiplex® D 80 mm



The «Art» of
Regional
Anaesthesia



New Catheter Generations for Continuous
Plexus Blockades for Adults and Paediatrics.



B | BRAUN

Contiplex® Tuohy

Contiplex® D 20 G

Contiplex® D 80 mm

New Systems for Plexus Anaesthesia

Contiplex® Tuohy Catheter Set

Fully insulated Tuohy type needle for Plexus Anaesthesia

- Pin point electrode for accurate stimulus-guided needle advancement
- With Tuohy curve for pointed catheter placement
- With sideport to ease aspiration or injection and simple insertion of the catheter



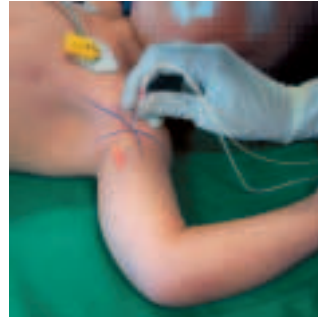
New "Through-the-Needle" System for Continuous Techniques.

Ideal for approaches like the interscalene nerve block (posterior access). Available in 40, 100 and 150 mm length.

Contiplex® D 20 G Catheter Set

New "SlimLine" for Minimised Puncture Trauma

- Available in 20 G/∅ 1.1 mm, 55 and 33 mm length
- Bevel tip geometry 15°
- Catheter with indwelling stabilising wire

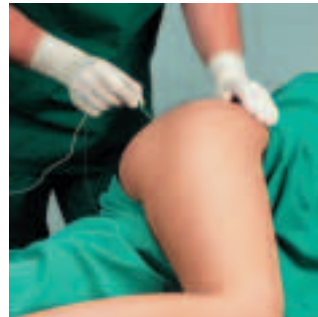
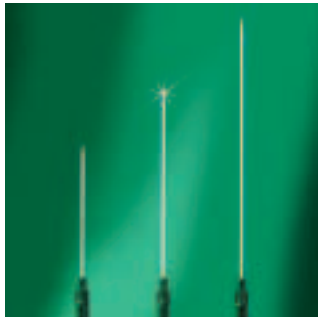


The new access to successful continuous nerve blocks on children (1.1 × 33 mm) and reduced trauma on adults (1.1 × 55 mm).

Contiplex® D 80 mm

Line Extension of the well-proven Contiplex® System

- Bevel tip geometry 15°
- Tailored according to the requirements of the patients' individual anatomies



New 80 mm Contiplex® D completes the existing range of 55 mm and 110 mm length and offers optimum puncture accuracy e.g. on Psoas Compartment- or transgluteal Sciatic Blocks

Ordering Information

Product Description	Cannula (∅ × Length)	Code Number	Sales Unit
Contiplex® Tuohy, Sets with Contiplex® Catheter 0.45 × 0.85 × 1000 mm and sideport			
with cannula 18 G × 1 1/2", insulated Tuohy type CNB 150	1.3 × 40 mm	331695	12
with cannula 18 G × 4", insulated Tuohy type CNB 400	1.3 × 100 mm	331693	12
with cannula 18 G × 6", insulated Tuohy type CNB 600	1.3 × 150 mm	331694	12

Product Description	Cannula (∅ × Length)	Code Number	Sales Unit
Contiplex® D, Sets with Contiplex® Catheter 0.41 × 0.71 × 400 mm with integrated wire			
with cannula D 20/033/C, 20 G × 1 1/3", 15° bevel	1.1 × 33 mm	489 2402	10
with cannula D 20/055/C, 20 G × 2 1/8"	1.1 × 55 mm	489 2410	10
Contiplex D, Set with Contiplex® Catheter 0.45 × 0.85 × 1000 mm	1.3 × 80 mm	489 5819	10

B | BRAUN
HOSPITAL CARE

B. Braun Melsungen AG
P.O. Box 11 20
D-34209 Melsungen

Tel (0 56 61) 71-0
Fax (0 56 61) 71-45 55
www.bbraun.com