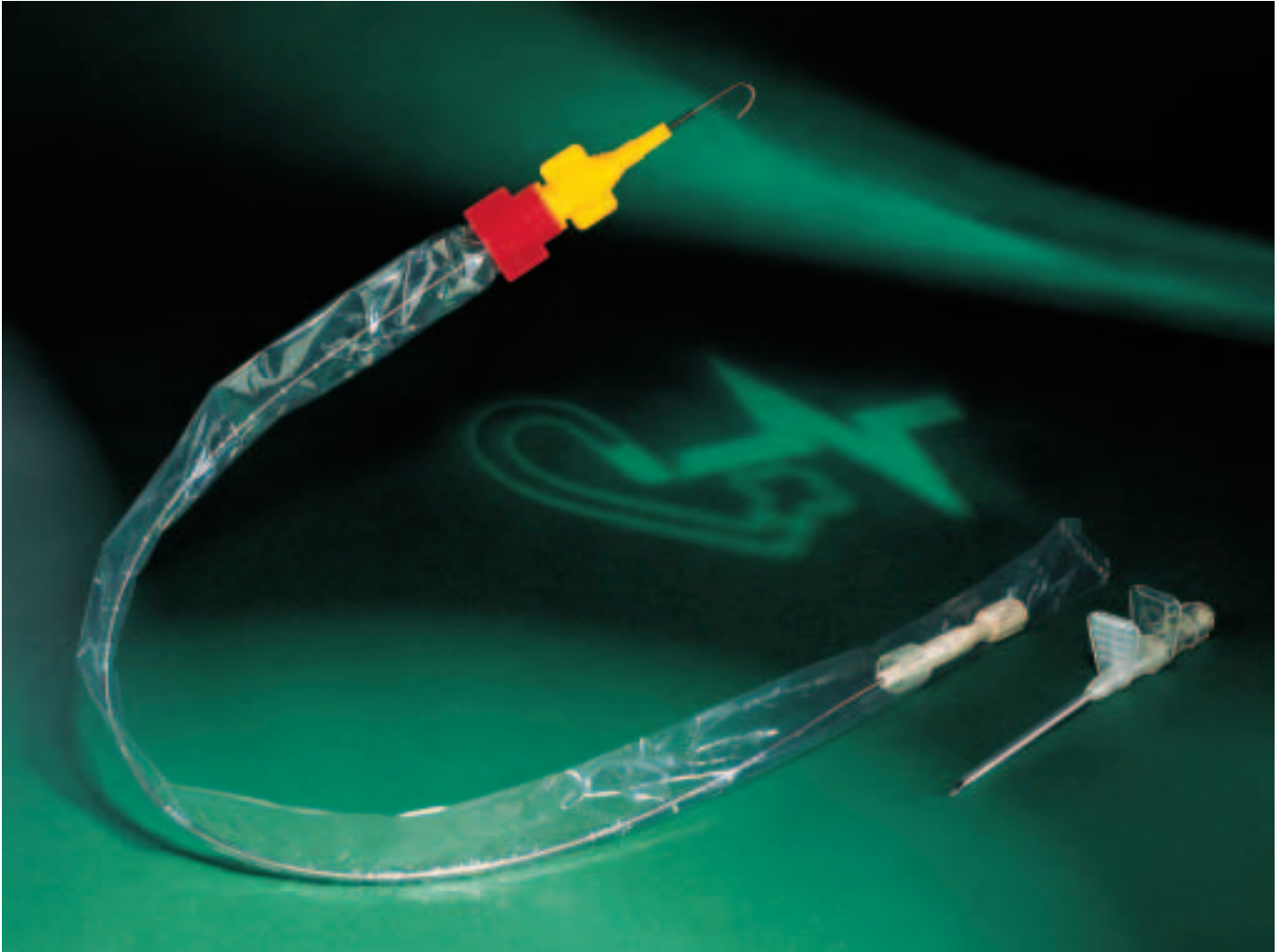


# Cavafix<sup>®</sup> Certodyn<sup>®</sup> Cavafix<sup>®</sup> Certodyn<sup>®</sup> SD

ECG guided catheter placement



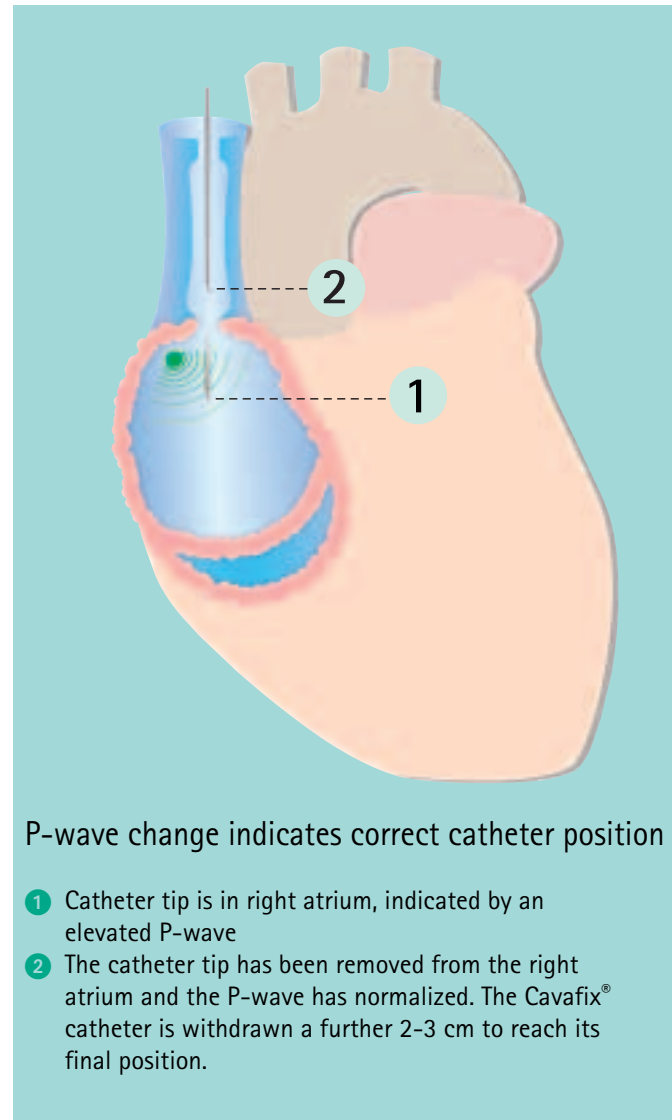
Rapid and reliable catheter placement under simultaneous ECG guidance

# Cavafix® Certodyn®, Cavafix® Certodyn® SD

## ECG guided catheter placement

### Rapid and reliable catheter placement utilizing simultaneous right atrial ECG guidance

- enables immediate catheter repositioning
- helps prevent subsequent complications, particularly the risk of pericardiac perforation and catheter-induced cardiac arrhythmias
- reduces procedure time and costs involved



- The guide stylet with its highly flexible J-tip facilitates problem-free advancement of the catheter and passing through venous valves.
- The protruding J-tip ensures an optimal impulse reception from the right atrium.

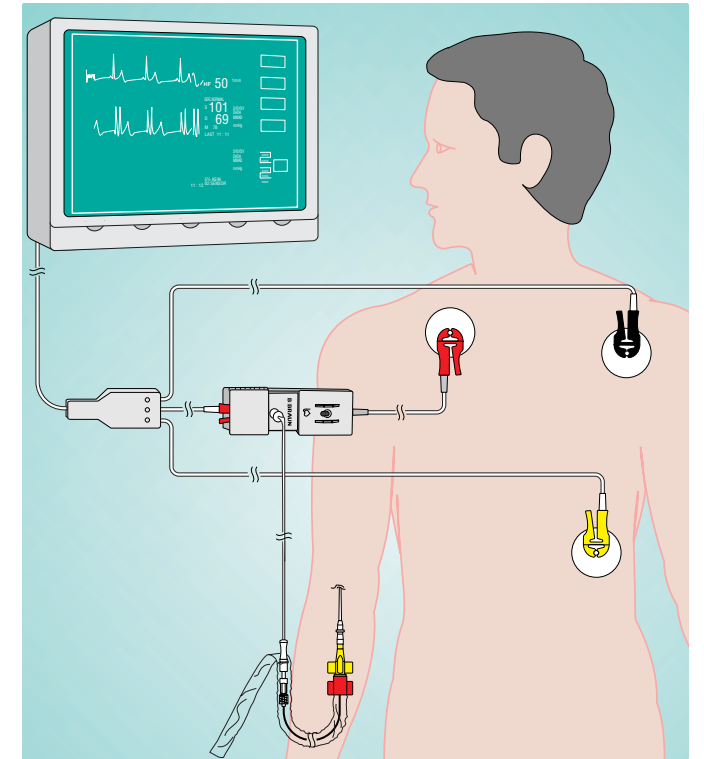


### Certodyn® universal adapter – the rapid Connection to the ECG monitor

- The Certodyn® universal adapter can be combined with nearly all patient cables (see figure)
- May be switched from extracorporeal to intra-atrial ECG



- The Certodyn® CAB connecting cable guarantees secure impulse transmission to the ECG monitor.
- The connection jack for the cable meets all safety regulations according to MedGV and VDE.

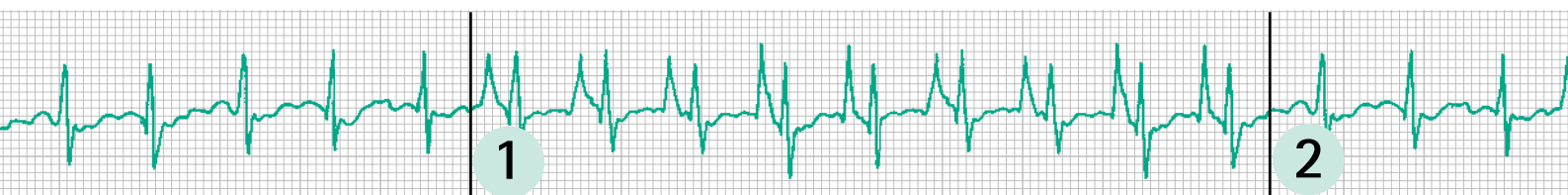


### ECG lead for gentle, reliable and economical Catheter positioning

- no X-ray required, no radiation exposure
- no incidents with contrast medium
- effortless identification of the P wave and thus clear verification of position
- no subsequent recatheterization due to incorrect positioning
- reduced costs of equipment and staff

### For venipuncture:

- the proven MT Braunüle®
- the special SD Braunüle® for a reduced puncture trauma (Seldinger-effect)



**Cavafix®**  
Proven and established in general and clinical practice

# Cavafix® Certodyn® Cavafix® Certodyn® SD

## Presentations

Product name	Code	Braunüle®		Catheter		Code-no.
		Size G	length mm	Ø ID × OD mm	length cm	
Cavafix® Certodyn® Typ Standard	335	14	50	1.1 × 1.7	32	418 0356
Cavafix® Certodyn® Typ Standard	355	14	50	1.1 × 1.7	45	418 0550
Cavafix® Certodyn® Typ Standard	358	14	80	1.1 × 1.7	45	418 0585
Cavafix® Certodyn® Typ Standard	375	14	50	1.1 × 1.7	70	418 0755
Cavafix® Certodyn® Typ Siemens	335	14	50	1.1 × 1.7	32	418 5056
Cavafix® Certodyn® Typ Siemens	355	14	50	1.1 × 1.7	45	418 5064
Cavafix® Certodyn® Typ Siemens	358	14	80	1.1 × 1.7	45	418 5072
Cavafix® Certodyn® Typ Siemens	375	14	50	1.1 × 1.7	70	418 5080
Cavafix® Certodyn® SD Typ Standard	355	18	50	1.1 × 1.7	45	415 0554
Cavafix® Certodyn® SD Typ Standard	358	18	50	1.1 × 1.7	45	415 0589
Cavafix® Certodyn® SD Typ Standard	375	18	50	1.1 × 1.7	70	415 0759
Certodyn® universal adapter						415 0228
Certodyn® universal adapter Paed						415 0724

**B | BRAUN**  
HOSPITAL CARE

B. Braun Melsungen AG  
P. O. Box 11 20  
D-34209 Melsungen  
Tel +49 (56 61) 71-0  
Fax +49 (56 61) 71-45 55  
www.bbraun.com