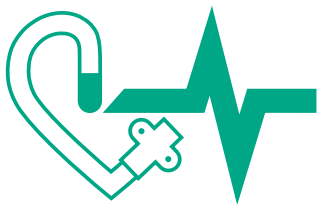
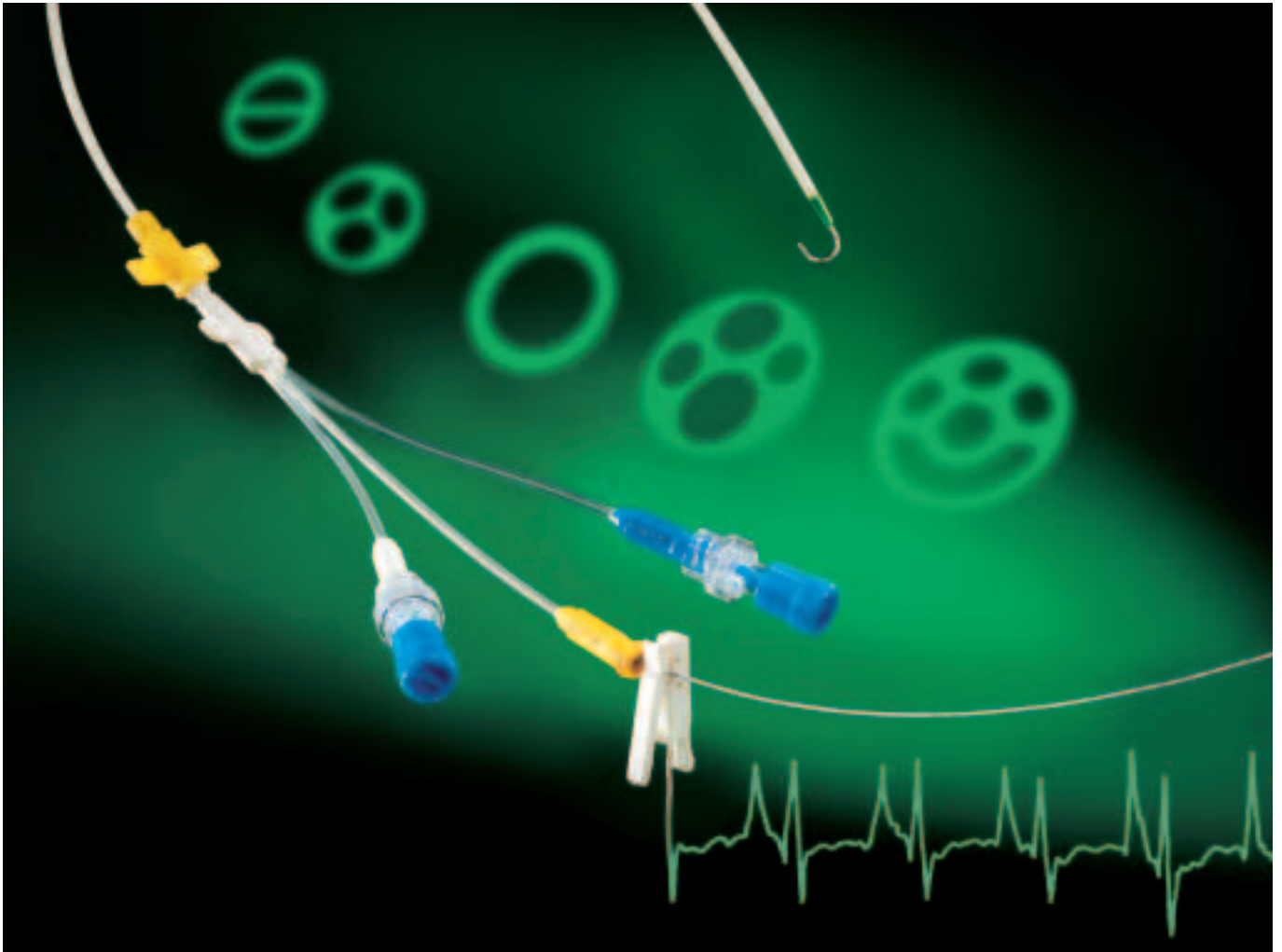


Certofix[®]

Central venous catheters for
placement using the Seldinger technique with
simultaneous ECG lead option



For more safety in treatment and diagnosis

B|BRAUN

Certofix[®] Mono Duo, Trio



A wide range of Certofix[®] catheters is available for use in intensive care and emergency medicine.

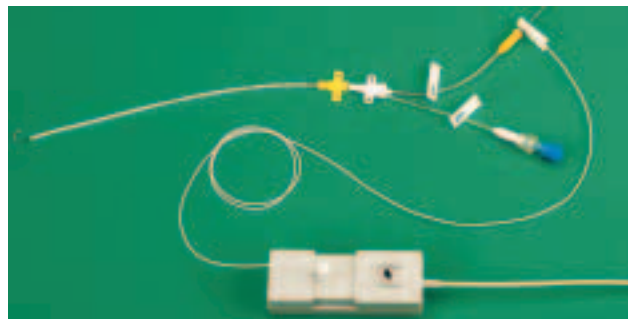
Multi-lumen Certofix[®] catheters are particularly suitable for avoiding drug incompatibilities. Their separate entry points for varied medicines and solutions reduce signs of incompatibility – such as precipitation or shifts in pH value – to a minimum.

The advanced material of Certofix[®] catheters allows their flexibility to be increased by approx. 50% in the blood-stream at a temperature of 37°C. This means that Certofix[®] catheters are able to adapt to even very difficult vein situations, avoiding venous wall irritation to a large extent.



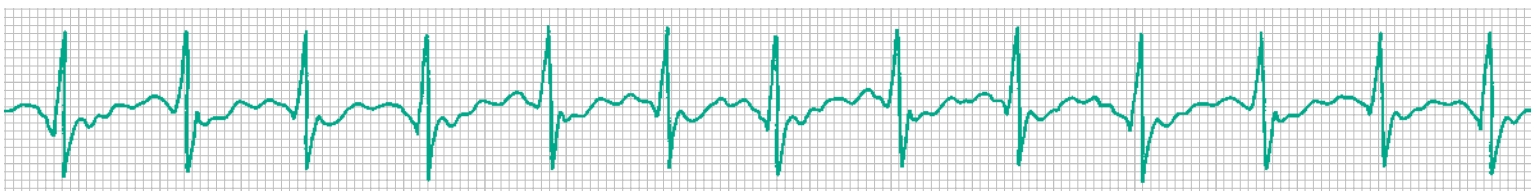
Safsite[®] – safety connector

- Automatically opens and closes on connection/disconnection of the luer fitting
- Reliably prevents the spillage/leakage of fluids and blood and the entry of air into the system



Simultaneous positioning check during catheterisation via the atrial ECG

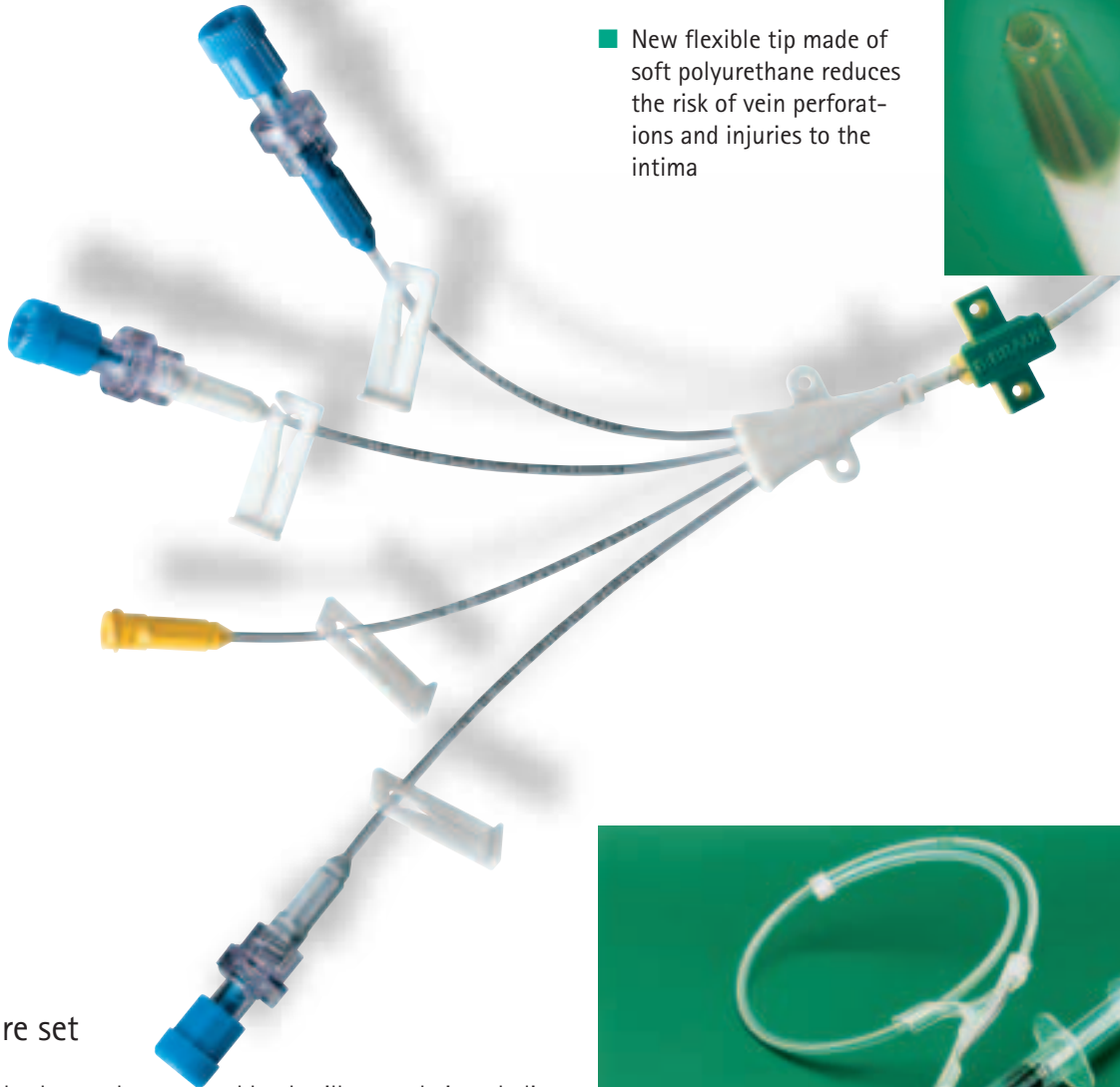
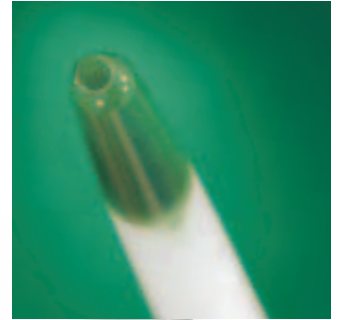
- enables immediate corrective measures to be made in the case of initial incorrect positioning of the catheter
- helps prevent subsequent complications, particularly the risk of pericardiac perforation and cardiac arrhythmias



For more safety in treatment and diagnosis

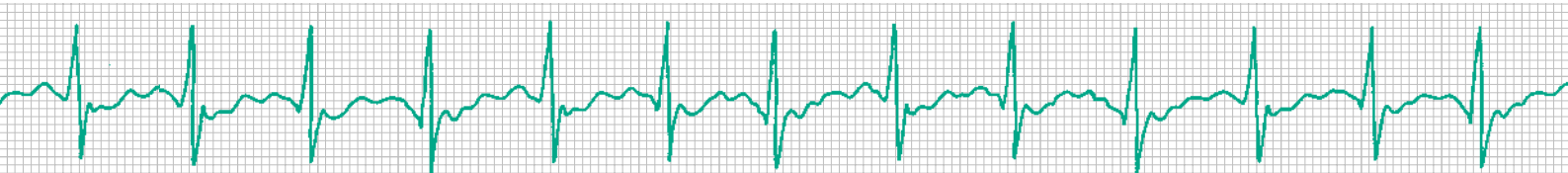
Catheter with soft tip

- New flexible tip made of soft polyurethane reduces the risk of vein perforations and injuries to the intima



Puncture set

- The valved cannula prevents blood spillage and air embolism
- The guidewire is positioned through the valved side port
- The ergonomically shaped dispenser facilitates ease of use



Certofix® Quattro

Certofix® Quinto



Certofix® Quattro...
...for a more differentiated infusion therapy

- with an optimum design of the lumina
- for the application of highly specific drugs
- for cardiac interventions

Certofix® Quinto...
...for more safety with poly-traumatised patients

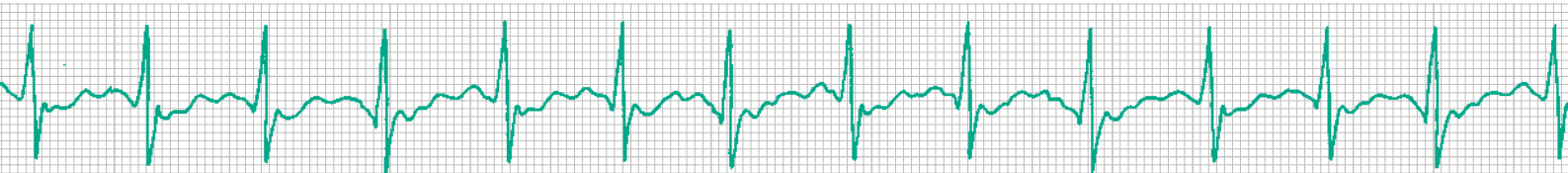
- for more versatile intensive care treatment
- for high volume fluid replacement and blood transfusions
- to avoid drug incompatibilities

Flow rates and filling volumes

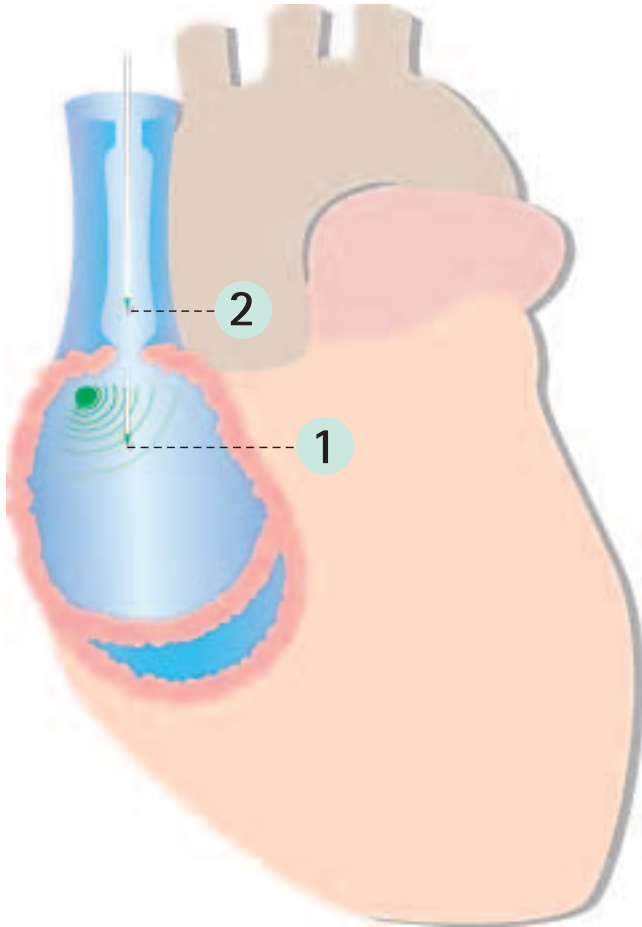
	Distal 16 G	Middle 1 18 G	Middle 2 18 G	Proximal 14 G
Catheter length 15 cm				
Flow rate (ml/min)	68	28	28	68
Filling volume (ml)	0,4	0,3	0,3	0,4
Catheter length 20 cm				
Flow rate (ml/min)	60	23	23	53
Filling volume (ml)	0,5	0,3	0,3	0,5
Catheter length 30 cm				
Flow rate (ml/min)	50	16	16	42
Filling volume (ml)	0,5	0,4	0,4	0,6

Flow rates and filling volumes

	Distal 16 G	Middle 1 18 G	Middle 2 18 G	Middle 3 18 G	Proximal 12 G
Catheter length 15 cm					
Flow rate (ml/min)	62	35	32	31	190
Filling volume (ml)	0,4	0,3	0,3	0,3	1,3
Catheter length 20 cm					
Flow rate (ml/min)	55	29	28	28	180
Filling volume (ml)	0,4	0,3	0,3	0,3	1,4
Catheter length 30 cm					
Flow rate (ml/min)	48	22	22	21	150
Filling volume (ml)	0,6	0,4	0,4	0,4	1,7



Catheter positioning with simultaneous ECG lead



Certofix® with ECG lead:
safe, reliable, economical

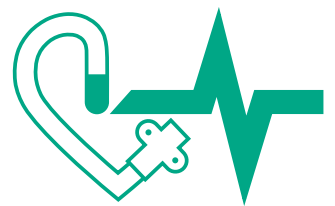
- no X-ray required, no radiation exposure
- no incidents with contrast medium
- effortless identification of the P wave on the ECG and thus clear verification of position
- no subsequent re-catheterisation due to incorrect positioning
- reduced costs of equipment and staff

Medicolegal aspects

ECG position monitoring provides for an equivalent level of documentation through accompanying ECG print-out as would be normally available by X-ray position monitoring.

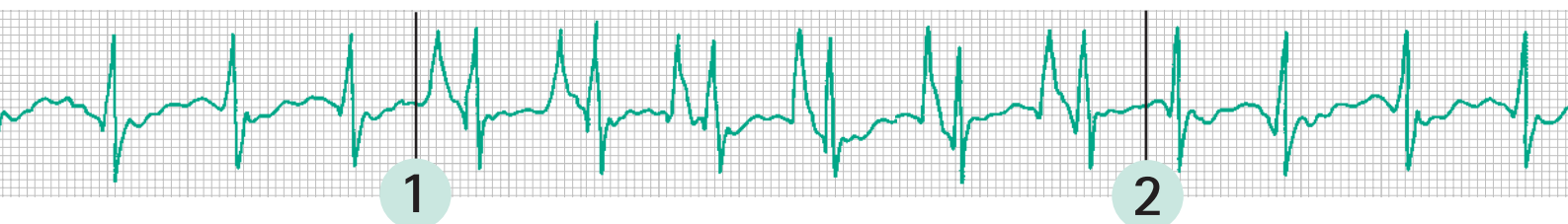
P wave change indicates correct catheter position

- 1 Catheter tip is in right atrium, indicated by an elevated P wave.
- 2 The catheter tip has been removed from the right atrium and the P wave has normalised. The Certofix® catheter is withdrawn a further 2–3 cm to reach its final position.



Certofix®

for the most exacting
demands in anaesthesia,
emergency and intensive
care medicine



Certofix[®] Product Range

Presentations

Catheter				Guide-wire	Catheter				Guide-wire
Name	Code No.	G/F	L. cm	L. cm	Name	Code No.	G/F	L. cm	L. cm
Mono S 215	416 0185	18/4	15	50	Mono S 330	416 0282	16/5	30	70
Mono V 215	416 0193	18/4	15	50	Mono V 330	416 0290	16/5	30	70
Mono S 220	416 0207	18/4	20	50	Mono S 415	416 0509	14/6	15	50
Mono V 220	416 0215	18/4	20	50	Mono V 415	416 0517	14/6	15	50
Mono S 315	416 0223	16/5	15	50	Mono S 420	416 0304	14/6	20	50
Mono V 315	416 0231	16/5	15	50	Mono B 420	416 0312	14/6	20	50
Mono B 320	416 0240	16/5	20	50	Mono V 420	416 0320	14/6	20	50
Mono S 320	416 0258	16/5	20	50	Mono S 420 LG	416 7368	14/6	20	70
Mono V 320	416 0266	16/5	20	50	Mono V 420 LG	416 7376	14/6	20	70
Mono S 320 LG	416 7341	16/5	20	70	Mono S 430	416 0762	14/6	30	70
Mono V 320 LG	416 7350	16/5	20	70	Mono B 430	416 0770	14/6	30	70
Mono B 330	416 0274	16/5	30	70	Mono V 430	416 0789	14/6	30	70
Mono B 330/5	416 0495	16/5	30	70					

Catheter 7F				Guide-wire
Name	Code No.	G	L. cm	L. cm
Duo SB 715	416 4156	16/16	15	50
Duo V 715	416 6159	16/16	15	50
Duo SB 720	416 2200	16/16	20	50
Duo V 720	416 1211	16/16	20	50
Duo SB 720 LG	416 7309	16/16	20	70
Duo V 720 LG	416 7317	16/16	20	70
Duo SB 730	416 2307	16/16	30	70
Duo V 730	416 1319	16/16	30	70
Duo HF SB 715	416 8500	14/18	15	50
Duo HF V 715	416 8518	14/18	15	50
Duo HF SB 720	416 8526	14/18	20	50
Duo HF V 720	416 8534	14/18	20	50

Catheter 7F				Guide-wire
Name	Code No.	G	L. cm	L. cm
Trio SB 715	416 1157	16/18/18	15	50
Trio V 715	416 2153	16/18/18	15	50
Trio SB 720	416 3206	16/18/18	20	50
Trio V 720	416 3214	16/18/18	20	50
Trio SB 720 LG	416 7325	16/18/18	20	70
Trio V 720 LG	416 7333	16/18/18	20	70
Trio SB 730	416 3303	16/18/18	30	70
Trio V 730	416 3311	16/18/18	30	70

Catheter 8F				Guide-wire
Name	Code No.	G	L. cm	L. cm
Quattro V 815	416 7767	16/18/18/14	15	50
Quattro V 820	416 7775	16/18/18/14	20	50
Quattro V 830	416 7783	16/18/18/14	30	70

Catheter 12F				Guide-wire
Name	Code No.	G	L. cm	L. cm
Quinto SB 1215	416 6833	16/18/18/18/12	15	50
Quinto V 1215	416 6841	16/18/18/18/12	15	50
Quinto SB 1220	416 6850	16/18/18/18/12	20	50
Quinto V 1220	416 6868	16/18/18/18/12	20	50
Quinto SB 1230	416 6876	16/18/18/18/12	30	70
Quinto V 1230	416 6884	16/18/18/18/12	30	70

LG = long guide-wire / HF = highflow / S = Seldinger cannula / B = I. V. Catheter Braunula / V = Valve cannula

B | BRAUN
HOSPITAL CARE

B. Braun Melsungen AG
P. O. Box 11 20
D-34209 Melsungen
Tel +49 56 61 71-0
Fax +49 56 61 71-45 55
www.bbraun.com