

**Intrapur® Plus**  
**Intrapur® Paed**  
**Intrapur® Neonat**

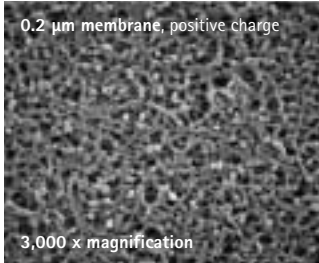
0.2 µm Infusion Filter with improved retention  
of particles, bacteria and endotoxins



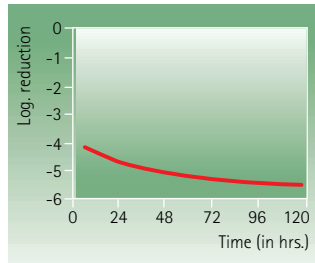
Greater safety during Critical Care  
Infusion Therapy

# Intrapur<sup>®</sup> Plus Intrapur<sup>®</sup> Paed Intrapur<sup>®</sup> Neonat

More efficiency with up to 96 hours' application



High performance membrane:  
Fast flow rates due to highly porous structure.



Endotoxin retention:  
Test with 0,9 % NaCl.



Simple connection and priming, quickly free of air without additional manipulation of the filter.



Infusion Filter Sets: Providing cost-effective safety, reliability and efficiency in use.

## More efficiency, improved endotoxin retention

- Superior throughput for volume therapies up to 2 liters/hour.
- Greater safety through improved retention of bacterial endotoxins with up to 96 hours' application.
- Retains bacteria and particles with automatic air venting.
- Intrapur<sup>®</sup> Neonat and Intrapur<sup>®</sup> Paed with reduced priming volume.

## Extended interval between filter changes

- Extension of the time of use to 96 hours with no reduction in the quality of therapy and care.
- Lowered costs through saving of time and materials.
- Medical waste is reduced; nursing staff is freed for other duties.

## Simple handling, safe application

- Fast priming with automatic air venting.
- Regardless of positioning reliable air retention via automatic venting.
- Easy to check – when attached to patient, filter surface is visible with inflow and outflow.
- Greater safety with drug incompatibilities.

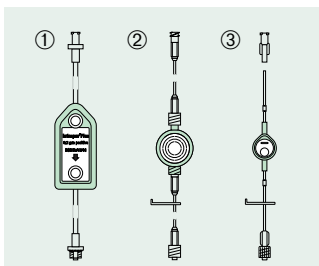
## Sets for the individual infusion regimen

- As standard Filter Set or as "custom-tailored" comprehensive solution in the Pro-Set program.

## 0.2 µm Infusion Filters, endotoxin retentive

Bacteria, endotoxin and particle retention for up to 96 hours. Automatic air venting.

Pressure resistant up to 3.1 bar (Neonat: 5.2 bar)



Filter selection	Effective filtration area	Priming volume	Flow rate (Aq. dist.)	Code-No. REF	Sales-unit-pcs.
① Intrapur <sup>®</sup> Plus	10.00 cm <sup>2</sup>	3.00 ml	> 30 ml/min	409 9800	50
② Intrapur <sup>®</sup> Paed	4.30 cm <sup>2</sup>	1.00 ml	> 10 ml/min	409 9753	50
③ Intrapur <sup>®</sup> Neonat	1.65 cm <sup>2</sup>	0.55 ml	> 2 ml/min	409 9451	50

- For all-in-one parenteral nutrition therapy: Intrapur<sup>®</sup> Lipid, Intrapur<sup>®</sup> Paed Lipid and Intrapur<sup>®</sup> Neonat Lipid.

**B | BRAUN**  
HOSPITAL CARE

B. Braun Melsungen AG  
P.O.Box 11 20  
D-34209 Melsungen  
Tel (0 56 61) 71 - 0  
Fax (0 56 61) 71 - 45 55  
<http://www.bbraun.com>