

Ureofix[®] 500 Ureofix[®] 500 plus

Setting the standard in urine measurement
Ureofix[®] Urine Measurement Systems



Available with and without anti-reflux valve

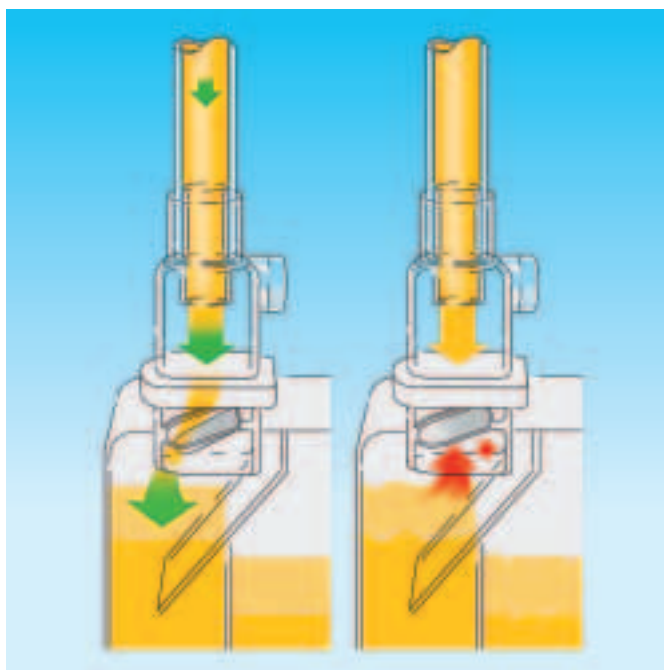
Ureofix[®] 500

Ureofix[®] 500 plus

Setting the standard in urine measurement

Drip chamber located at the inlet of the urine measurement system with anti-reflux valve below

- The Pasteurian pathway reduces retrograde bacterial migration
- The anti-reflux valve prevents flowback to the patient and wetting of the drip chamber in the event of misuse



Venting of the drip chamber via air filter to compensate for possible shifts in pressure

- highly hydrophobic filter
- impenetrable for air-borne bacteria
- protected against contact through positioning in housing

Easy-turn valve

- Simultaneous and complete emptying of all chambers of the measurement container



Bottom outlet

Its large bore internal diameter of 8 mm and its extended length allow:

- quick and efficient emptying process
- free flowing of coagulates
- contamination-free single-handed operation

Presentation (Systems and spare bags packed singly, sterile)

Description	Order Number	Sales Unit
Ureofix[®] 500 – Urine measurement system		
● with urine collecting bag 1.5 l	441 5000	10
● with urine bag 1.5 l with anti-reflux valve and bottom outlet	441 5400	
Ureofix[®] 500 plus – Urine measurement system with anti-reflux valve and drip chamber		
● with urine collecting bag 1.5 l	441 5507	10
● with urine bag 1.5 l with anti-reflux valve and bottom outlet	441 5701	

Description	Order Number	Sales Unit
Spare bag for Ureofix[®] 500/500 plus		
● urine collecting bag 1.5 l	441 5108	100
● urine collecting bag 3.5 l	441 5205	
● urine collecting bag 1.5 l with bottom outlet and anti-reflux valve	441 5450	
Accessories		
● Fixation clamp for tubing	441 1404	50
● Closed secretion bucket	489 0310	5
● Connecting tubing with conical connector	436 4309	100

B | BRAUN
HOSPITAL CARE

B. Braun Melsungen AG
P.O. Box 11 20
D-34209 Melsungen

Tel (0 56 61) 71-0
Fax (0 56 61) 71-45 55
www.bbraun.com