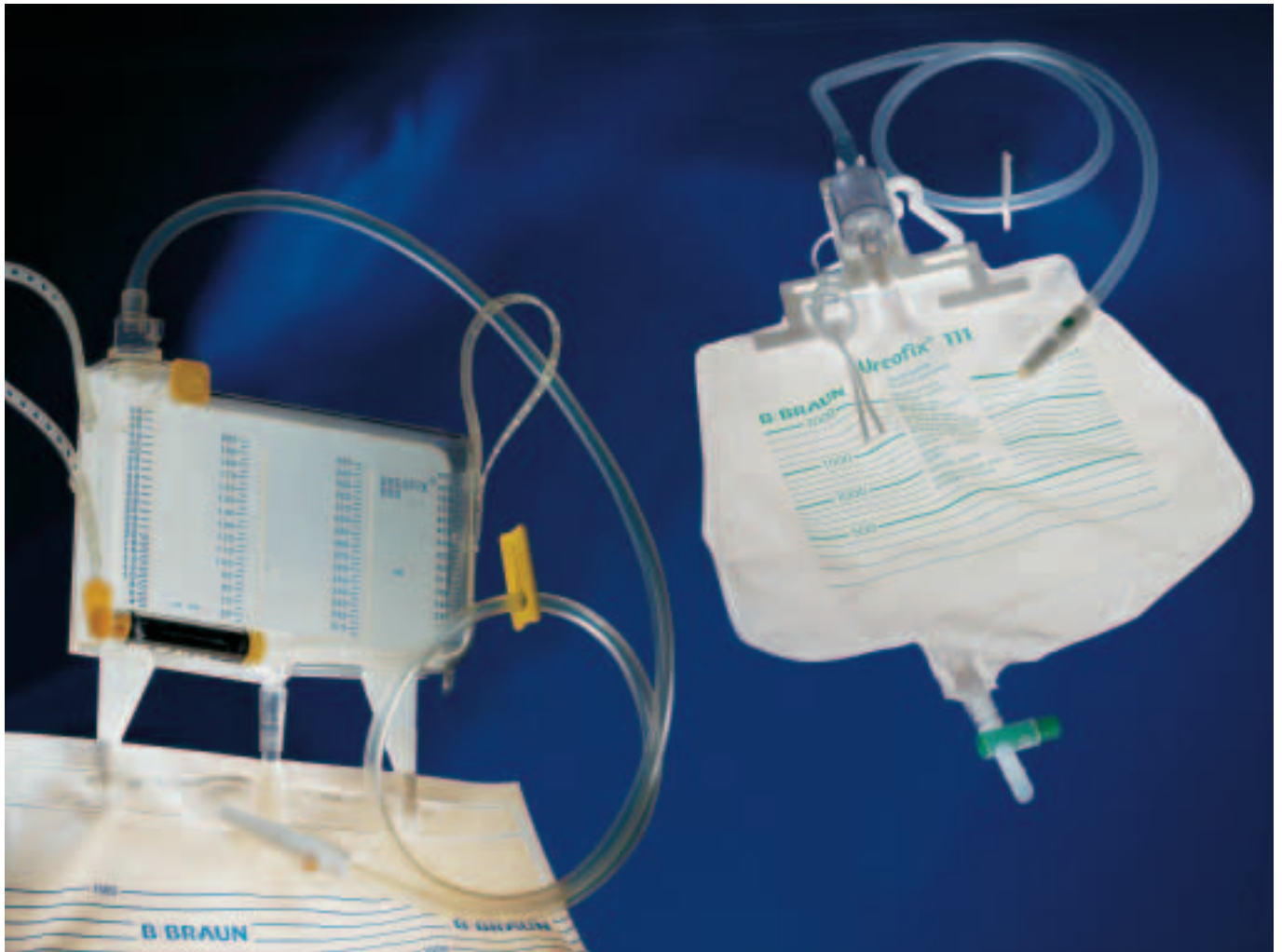


# Urine measurement Urine drainage

Ureofix® 500 plus, Ureofix® 111,  
Urotube® 20, Urine Collecting Bags



Therapy-orientated systems for urine  
measurement and urine drainage

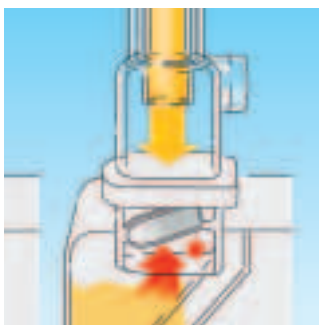
# Ureofix® 500 plus, Ureofix® 111, Urotube® 20, Urine Collecting Bags



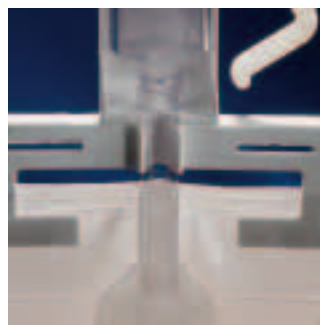
**Ureofix® 500 plus**  
The closed urine drainage system with fine measurement chamber for exact measuring of the urine volumes per hour. Measuring range from 2 ml up to 500 ml. Alternatively available with exchange bag or bag with bottom outlet and filling volumes of 1.5 l or 3.5 l.



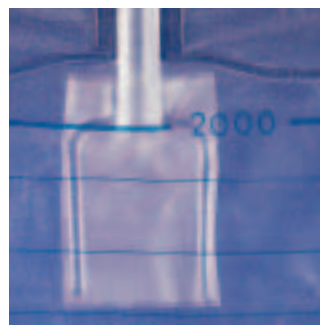
**Ureofix® 111**  
The safe closed urine drainage system for long-term use up to 2 weeks. Drip chamber and non-return valve prevent retrograde tracking of infection from the collecting bag to the drainage catheters. Multiple suspension possibilities (fixation bracket, cord, fixation plate) enable fixation to all types of bed frames.



**Method according to Pasteur**  
■ When using Ureofix® 500 plus, a vented drip chamber with non-return valve prevents retrograde tracking of infection



**Non-return valve**  
integrated into the bag of Ureofix® 111  
■ prevents reflux of urine into the drip chamber thus preventing bacterial invasion towards the patient



**Flutter valve**  
Non-return valve, integrated into Urotube® 20, urine collecting bag with bottom outlet  
■ prevents reflux of urine into the bladder



**Sampling port**  
Secured with a smooth highly elasticated material which facilitates  
■ multiple punctures for aspiration of urine samples  
■ hygienic and efficient disinfection of the surface

Quality assurance in the urine drainage  
by innovation and reliable construction



**Urotube® 20**

The closed urine collecting bag with non-return valve, catheter connector with integrated sampling port and bottom outlet.

The hygienic alternative to the closed urine drainage system for short-term drainage.



**Standard urine collecting bag**

The cost-effective solution for everyday use.

The user can select the appropriate collecting bag for any use from among a variety of bags (individually packed and sterile, sterile, non-sterile; 1.5 l and 2 l), with or without bottom outlet.



**Suspension**

Fixation bracket with high elasticity, rectangular locking position, with additional fixation plate facilitates

- single-handed use
- multiple suspension possibilities
- safe suspension to almost all types of bed frames



**Fixation helps**

- Reusable, solid fixation plates (see ill.) and wire brackets for all urine collecting bags not having an integrated suspension device



**Bottom outlet**

Its large bore internal diameter and the length of the outlet allow

- a quick and efficient emptying process
- free flowing of coagulants
- contamination-free single-handed operation



**Slide clamp**

- Closed slide clamp on the connecting tubing prevents filling up of drip chamber and non-return valve when the system is lying

# Ureofix® 500 plus, Ureofix® 111, Urotube® 20, Urine Collecting Bags

## Presentation of products

### Delivery program

Ureofix® 111	Code-No.	Sales unit/pcs
Closed urine drainage system with bottom outlet, individually packed, sterile		
Connecting tubing/bag volume		
100 cm, 2 l	441 3229	25
120 cm, 2 l	441 3237	25
100 cm, 4 l	441 3326	20
100 cm, 4 l, with suction ball	441 3423	20

Urotube® 20	Code-No.	Sales unit/pcs
Closed urine collecting bag with sampling port, non-return valve, bottom outlet, 100 cm, 2 l, individually packed, sterile	442 5235	25

Standard urine collecting bags	Code-No.	Sales unit/pcs
Conical connector		
Connecting tubing, 90 cm		
1.5 l, non-sterile	442 1167	250
1.5 l, sterile	442 5154	250
1.5 l, individually packed, sterile	442 3151	100
2.0 l, non-sterile	442 5103	250
2.0 l, sterile	442 5200	250
2.0 l, individually packed, sterile	442 3208	100

On request	Code-No.	Sales unit/pcs
Ureofix® 111 (code-no. 441 3229) and Cystofix® Set with splittable puncture cannula		
Fr cannula length/cm		
10 8	441 1170	20
10 12	441 1188	20

Ureofix® 500 urine measurement system	Code-No.	Sales unit/pcs
With exchange bag 1.5 l	441 5000	10
With bag 1.5 l with bottom outlet and non-return valve	441 5400	10
Ureofix® 500 plus – urine measurement system with non-return valve and drip chamber with exchange bag 1.5 l	441 5507	10
with bag 1.5 l with bottom outlet and non-return valve	441 5701	10

Exchange bags for Ureofix® 500/500 plus individually packed, sterile	Code-No.	Sales unit/pcs
1.5 l	441 5108	100
3.5 l	441 5205	100

Improved urine collecting bags	Code-No.	Sales unit/pcs
with non-return valve and bottom outlet 2.0 l		
2.0 l, individually packed, sterile	442 5251	75
2.0 l, sterile	442 5219	150

Accessories	Code-No.	Sales unit/pcs
Tube fixation clamp, non sterile	441 1404	50
Fixation plate for Ureofix® 111 and urine collecting bag, non sterile	441 0602	25
Closed urine collecting bucket, 7 l, cover with universal connector	489 0310	5
Connecting tubing from bottom outlet to urine collecting bucket	436 4309	100
Fixation bracket and suspension hook for urine collecting bag plastic-coated, non-sterile	449 0029	20

Leg urine bag	Code-No.	Sales unit/pcs
500 ml, sloping inlet, conical connector, connecting tubing 5 cm, non-return valve, outlet valve, sterile	442 3402	100
Fastening straps for leg urine bags made of Latex non-sterile	442 3550	10

Urine bags for children	Code-No.	Sales unit/pcs
Graduation up to 100 ml, self-adhesive, variable size of adhesive surface		
Drainage tube 90 cm, slide clamp, non-sterile, box of 20 pcs	442 3046	5 boxes
Bottom outlet, non-return valve non-sterile, box of 10 pcs	442 3135	10 boxes
Bottom outlet, without non-return valve, individually packed, sterile, box of 10 pcs	442 5030	10 boxes
Bottom outlet, without non-return valve, non-sterile, box of 10 pcs	442 3038	10 boxes

**B | BRAUN**  
MEDICAL

**B. Braun Melsungen AG**

PO Box 11 20  
D-34209 Melsungen

Tel +49 (5661) 71-0

Fax +49 (5661) 71-20 44

www.bbraun.com